



# THE SWEETWATER



## THE SWEETWATER Model number: 45TMA32764AH18S

4 beds • 2 baths • 2432 sq.ft. • 32' width • 76' depth

Our home building facilities invest in continuous product and process improvements. Plans, dimensions, features, materials, specifications and availability are subject to change without notice or obligation. Renderings and floor plans are representative likenesses of our homes and may differ from the actual homes. We invite you to tour a Home Center near you and inspect the highest value in quality housing available or call (903) 838-5994 to speak with a Home Consultant. Copyright 2017, CMH. All rights reserved.

<https://www.claytonhomestexarkana.com>

### CLAYTON HOMES- TEXARKANA

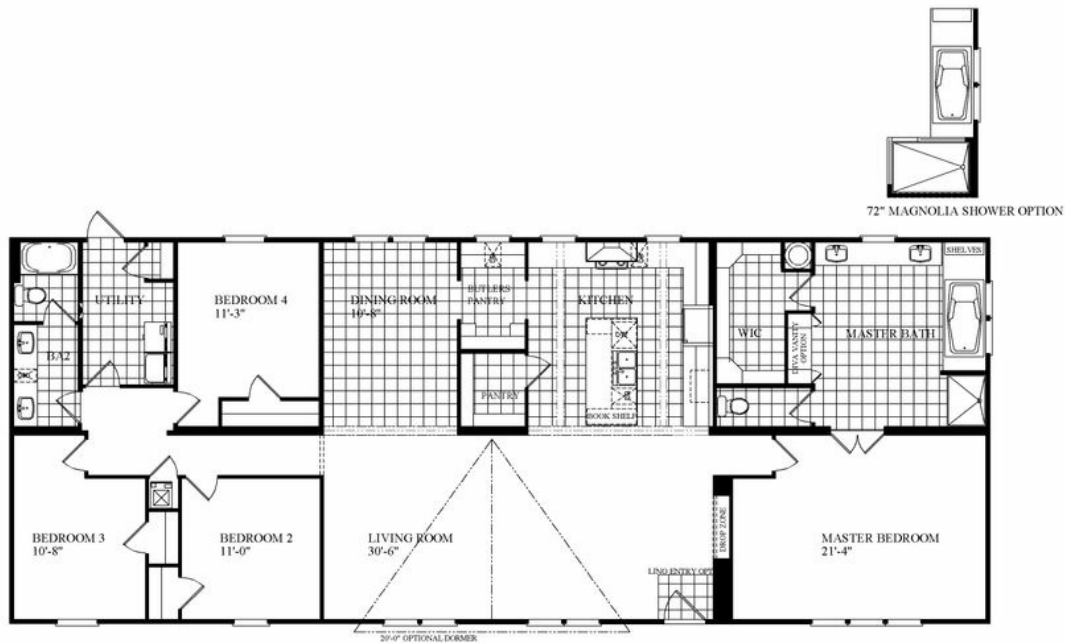
4402 SOUTH LAKE DRIVE,  
HWY 59  
TEXARKANA, TX 75501

Monday - Thursday: 9am to 6pm  
Friday: 9am to 6pm  
Saturday: 9am to 5pm  
Sunday: Closed

(903) 838-5994



# THE SWEETWATER



## THE SWEETWATER Model number: 45TMA32764AH18S

**4 beds • 2 baths • 2432 sq.ft. • 32' width • 76' depth**

Our home building facilities invest in continuous product and process improvements. Plans, dimensions, features, materials, specifications and availability are subject to change without notice or obligation. Renderings and floor plans are representative likenesses of our homes and may differ from the actual homes. We invite you to tour a Home Center near you and inspect the highest value in quality housing available or call (903) 838-5994 to speak with a Home Consultant. Copyright 2017, CMH. All rights reserved.

<https://www.claytonhomestexarkana.com>

### CLAYTON HOMES- TEXARKANA

4402 SOUTH LAKE DRIVE,  
HWY 59  
TEXARKANA, TX 75501

Monday - Thursday: 9am to 6pm  
Friday: 9am to 6pm  
Saturday: 9am to 5pm  
Sunday: Closed

(903) 838-5994